

WESTPORT MEDICAL  
POWERTOME® 100S

# Tips and Techniques for using The Powertome®



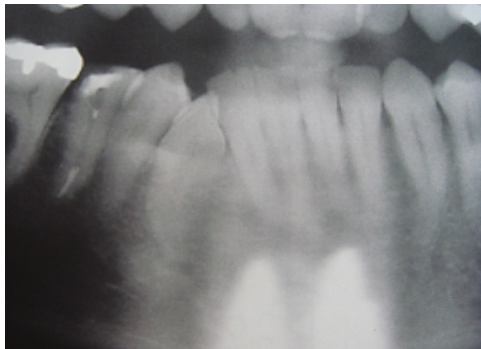
THE POWERTOME® *the extraction advantage™ for surgeons and patients.*

## Initial Use....

### Perform a Full-thickness Flap

Proper positioning of the Powertome® periosteal elevator tip is very important and may require practice before the technique becomes clear.

Until the practitioner can confidently position the tip into the PDL space, a full-thickness flap should be performed to verify correct positioning.



**Use a radiograph to gauge root depth and avoid going past the confines of the socket.**

### Avoid Nerves!

Before beginning an extraction, it is important to consider the depth of roots and the proximity to nerve pathways.

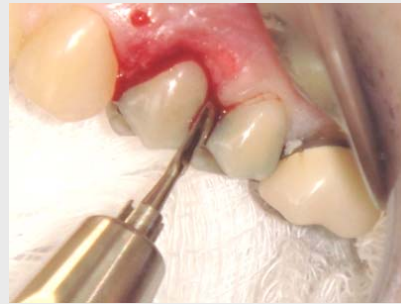
Start with a radiograph to gauge the depth of the root.

If the extraction occurs in an area near the passageway of a nerve, use caution to avoid going past the confines of the socket, which could result in the tip damaging nerve tissue.

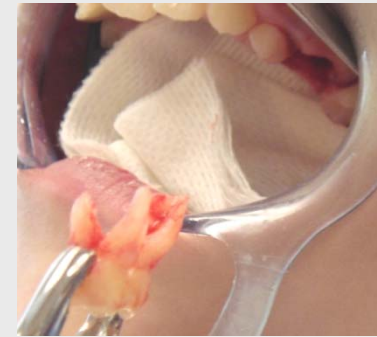
THE POWERTOME® *the extraction advantage™ for surgeons and patients.*



**Mandibular  
premolar  
anterior will  
be the best  
place to  
start**



**Maxillary  
premolar  
anterior  
will be  
next least  
difficult  
area**



**Maxillary  
and  
mandibular  
molars  
should be  
attempted  
last**

## Start in the Least Difficult Areas

Start with the least difficult teeth. Maxillary incisors, canines, and premolars are easiest to instrument due to less dense bone and easier access. The next easiest teeth to instrument will be the mandibular incisors, canines and premolars. The most difficult teeth to instrument are maxillary and mandibular molars. Keep in mind that anywhere you use a straight elevator the PowerTome® can be used. There is a certain amount of experience using the PowerTome® that is needed to become proficient in its use. Prior or current use of a hand periosteal elevator is most helpful.

**THE POWERTOME®** *the extraction advantage™ for surgeons and patients.*



**Tip positioned in the interproximal space**

## Positioning the Periotome Tip

It is important to locate proper tip position before applying power to the Powertome®.

Start at the interproximal space, along the mesial facial or distal facial line angle where bone tends to be the thicker.

Starting on the facial side of the tooth where bone is softer will create a void that allows the tooth to displace.

## Support the Mandible

When performing extractions on the lower jaw, be sure to have a mouth prop in place. Support the jaw directly beneath the extraction site for stability. This can be done by the practitioner or an assistant. Use a retractor to hold the cheek away from operating tools and aid in visualization.

## Keep Hand Piece in Motion During Use

Once the periodontal ligament (PDL) space has been located, and the tip properly inserted, apply power to the Powertome®. It is helpful and keeps the tip from binding if the handpiece is kept in motion while powered.



**Follow the contour of the root in a sweeping motion**

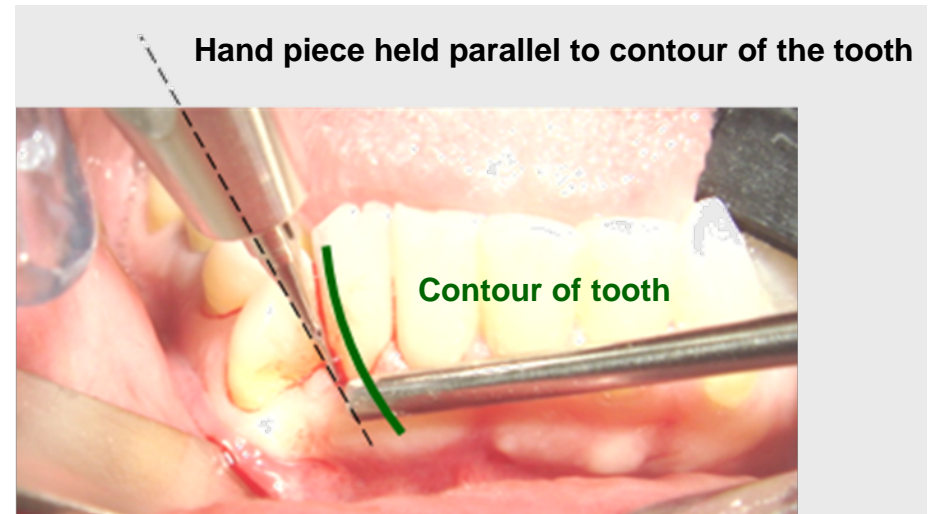
Move toward the facial side of the tooth, following the anatomical contour of the root in a sweeping motion.

Advance the tip in 2-4mm increments. Keep the tip parallel to the PDL space.

Remove and reposition the tip as necessary to maintain proper alignment within the PDL space. It is not necessary to apply power to the Powertome® as the tip is withdrawn.

## Keep Tip Parallel to the Contour of the Tooth

When locating the PDL space, carefully adjust the angle of the Powertome® periosteal tip. When the angle is correct, the Powertome® periosteal tip will advance easily. Excessive hand pressure is not necessary and may result in instrument slippage.



For additional information, please visit our website at  
[www.westportmedical.com](http://www.westportmedical.com)

**THE POWERTOME®** *the extraction advantage™ for surgeons and patients.*